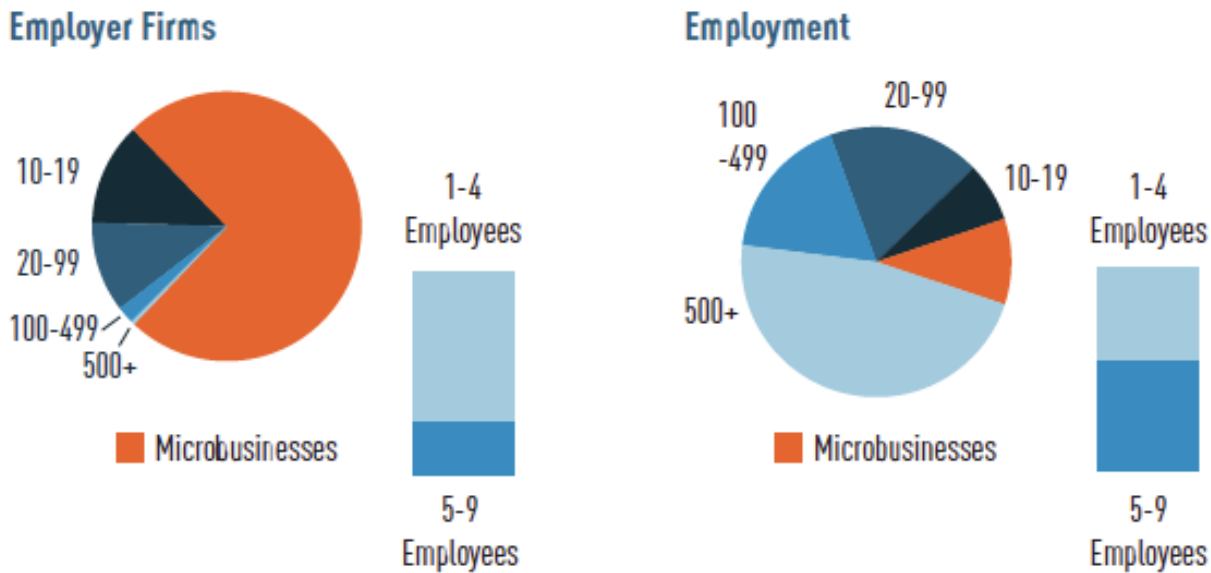


Small Business Facts: Role of Microbusiness Employers in the Economy

Chart 1: Microbusiness Firm and Employment Shares



By Brian Headd, Economist

Microbusiness employers (firms with 1-9 employees) are the most common kind of employer firm, but they account for a relatively small share of employment.

America's 3.8 million microbusiness employers made up 74.8 percent of all private-sector employers in 2016, and they provided 10.3 percent of the private-sector jobs (Chart 1). In addition to the microbusiness employers, there were another 24 million nonemployer businesses in 2015. (Source: Bureau of Labor Statistics, Business Employment Dynamics, Census Bureau, Non-employer statistics)

Microbusiness employers' share of employment is declining.

Microbusiness employers' share of private-sector employment dropped from over 14 percent in 1985 to 11 percent (or 13 million employees) in 2014 (Chart 2, on page 6).

(Source: Census Bureau, Business Dynamics Statistics, Initial Firm Size)

Most microbusiness employer firms are more than five years old.

In 2014, 64 percent of microbusinesses were over five years old, and these firms held 67 per-

cent of the microbusiness employment.

(Source: Census Bureau, Business Dynamics Statistics, Initial Firm Size)

Microbusiness hiring has an oversized role in employment

Microbusiness employers accounted for 11 percent of the 13.7 million private-sector net job gains from 2010 to mid-2016, with 70 percent of the microbusiness employers gains coming from business turnover (new firm job gains minus closure job losses) as opposed to existing firms.

(Source: Bureau of Labor Statistics, Business Employment Dynamics)

Finance, Insurance and Real Estate has the highest share of microbusinesses. In 2014, the "finance, insurance and real estate" industry had the highest share of microbusiness employers at 86 percent and "agriculture, forestry, and fishing (minus farms)" had the highest share of employment at 31 percent.

(Source: Census Bureau, Business Dynamics Statistics, Initial Firm Size)

SOURCE: U.S. SBA

SBE OUTREACH SERVICES

With 1.5 million businesses in our database, SBE is California's #1 source for diversity outreach.

Advertisements

Placed in the Small Business Exchange newspaper, SBE Today newsletter, and online at www.sbeinc.com

Faxed and Eblast Solicitations

Targeted mailings sent to businesses per your criteria.

Telemarketing

Telephone follow-up calls that follow a script of 5 questions you create.

Computer Generated Reports

Will fit right into your proposal, along with a list of interested firms to contact.

Contact Info:

795 Folsom Street, 1st Flr, Room 1124
San Francisco, CA 94107

Email: sbe@sbeinc.com

Website: www.sbeinc.com

Phone: (415) 778-6250, (800) 800-8534

Fax: (415) 778-6255

Publisher of
Small Business Exchange
weekly newspaper



California Sub-Bid Request Ads



BROSAMER & WALL, INC.

An Equal Opportunity Employer
is requesting quotations from all qualified DBE
Professional services, sub-contractors, material suppliers and trucking for the following project:

Contract No. 04-3G6034

Pavement Rehabilitation and Ramp Metering

**STATE HIGHWAY 680 IN ALAMEDA COUNTY, IN FREMONT, FROM 0.15 MILE SOUTH OF SCOTT CREEK ROAD UNDERCROSSING
TO AUTOMALL PARKWAY OVERCROSSING.**

Bid Closing Date: January 10, 2018 @ 2:00 PM

DBE GOAL: 12%

**We Encourage All DBEs To Attend The Mandatory Prebid Meeting Scheduled On November 15, 2017 At 10:00 A.M.
In Order To Meet The B&W Team At The Caltrans Pleasanton Construction Office, 5675 B Gibraltar Dr., Pleasanton, Ca 94588.**

CONTACT:

Brosamer & Wall Inc.

1777 Oakland Blvd, Suite 300 • Walnut Creek, California 94596

PH: 925-932-7900 • FAX: 925-279-2269

PROJECT SCOPE:

We are requesting bids for the following trades and/or material suppliers:

Brosamer & Wall Inc., is requesting quotes from all qualified subcontractors and suppliers including Certified DBE firms for all items of work, including but not limited to:

Lead Compliance Plan, Progress Schedule, Construction Area Signs, Traffic Control System, Temporary Traffic Devices, Temporary Traffic Stripe (Paint), Temporary Railing (Type K), Prepare SWPPP, Storm Water Sampling And Analysis Day, Storm Water Annual Reports, Street Sweeping, Temporary Erosion Control Measures (Check Dams, Fiber Roll, Protect Inlets, Etc.), Remove Yellow Thermoplastic Traffic Stripe (Hazardous Waste), Treated Wood Waste, Temporary High Visibility Fence, Clearing And Grubbing, Structure Excavation, Structure Backfill, Pervious Backfill Material (Retaining Wall), Aggregate Base, Aggregate Subbase, Lean Concrete Base, Lean Concrete Base Rapid Set, Crack & Seal Existing PCC Pavement, Crack Treatment, Replace Asphalt Concrete Surfacing, Hot Mix Asphalt, Rubberized Hot Mix Asphalt, Geosynthetic Pavement Interlayer, Place Hot Mix Asphalt Dike, Tack Coat, Remove Asphalt Concrete Pavement, Remove Asphalt Concrete Dike, Cold Plane Asphalt Concrete Pavement, Precast Jointed Concrete Pavement, Individual Slab Replacement (RSC), Furnish Piling, Drive Pile (Class 90), 60" Cast In Drilled Hole Concrete Pile (Sign Foundation), Structural Concrete Retaining Wall, Structural Concrete, Minor Concrete, Fractured Rib Texture, Joint Seal, Bar Reinforcing Steel, Furnish Sign Structure (Truss), Remove Sign Structure, Underground Storm Drain Systems – Reinforced Concrete Pipe, Remove Concrete Channel, Culvert Slurry Cement Backfill, Sand Backfill, Concrete (Gutter Lining), Rock Slope Protection, Rock Slope Protection Fabric, Minor Concrete, Minor Concrete (Brushed Concrete), Frame & Grate, Remove Pavement Marker, Pavement Marker (Retroreflective), Barrier Marker, Object Marker, Remove Roadside Sign, Panel, Relocate Roadside Sign, Furnish Aluminum Sign Panels, Retroreflective Sheeting, Metal (Barrier Mounted Sign), Roadside Sign (One And Two Post), Midwest Guardrail System (Wood Post), Vegetation Control (Minor Concrete), Transition Railing, End Anchor Assembly, Alternative In Line Terminal System, Concrete Barrier, Remove Guardrail, Thermoplastic Pavement Marking (Enhanced Wet Night Visibility), Two Component Paint Traffic Stripe, Thermoplastic Traffic Stripe, Rumble Strip, Maintaining Existing Traffic Management System Elements During Construction, Modifying Existing Electrical System, General Trucking and Bulk Asphalt Oil Supply.

Requirements: Brosamer & Wall, Inc. will work with interested subcontractors/suppliers to identify opportunities to break down items into economically feasible packages to facilitate DBE Participation. Brosamer & Wall, Inc. is a union signatory contractor. Subcontractors must possess a current contractor's license, insurance coverage and worker's compensation for the entire length of the contract.

All subcontractors will be required to sign our standard Subcontract Agreement. 100% payment and performance bonds may be required. If you have any questions regarding this project or need assistance in obtaining/waiving insurance, bonding, equipment, materials and/or supplies please call or email Robert Rosas contact information below.

Plans and specifications can be viewed at our office located at 1777 Oakland Blvd Suite 300, Walnut Creek, Ca. 94596 or at no cost from Caltrans website. B&W will also make plans electronically please email rrosas@brosamerwall.com for free online link. Brosamer & Wall INC., intends to work cooperatively with all qualified firms seeking work on this project. If you are interested in submitting a subcontractor bid for this project, you may contact Robert Rosas Chief Estimator at 925-932-7900 or fax us your quote at 925-279-2269. PLEASE SUBMIT A COPY OF YOUR CURRENT DBE CERTIFICATION WITH YOUR BID. Subcontractors, Dealers/Suppliers and Brokers please provide your designation code to us on or before the bid date. B&W, INC., IS AN EQUAL OPPORTUNITY EMPLOYER.

Balfour Beatty Infrastructure Inc.

9800 S Meridian Blvd Suite 250, Englewood, CO 80112 • Phone: (720) 643-2292

Balfour Beatty Infrastructure, Inc. (BBII) is soliciting proposals from all interested contractors for architectural (platform demolition, public art relocation and installation, specialty signing, high performance coatings, canopy glazing, glazed windscreens, platform seating, trash cans, railing and guardrails, platform toppings, and platform lighting), plumbing, roadway, sewer, electrical, traffic signals, survey, traffic control, hazardous materials transportation and disposal, and trucking subcontract work associated with the **UCSF Platform and Track Improvement Project** currently advertised by **San Francisco Municipal Transportation Agency (SFMTA) in San Francisco, California.**

For this project, a goal for Local Business Enterprise (LBE) participation has been established. Subcontractors meeting project goals for LBE criteria may be given preference in order to meet these goals.

If interested in submitting a bid in any of these categories, please email railbids@bbiis.com for a link to the specifications and plans.

All questions or clarifications with respect to the inquiry can be addressed to Kelsey Chiarelli by email at kchiarelli@bbiis.com or by phone at 720-737-4390.

Proposals must be submitted no later than 1/10/2018 at 4:00 PM PST to railbids@bbiis.com



Hathaway Dinwiddie

**REQUEST FOR QUALIFICATIONS & BIDS
SOMA HOTEL**

100 Channel Street, San Francisco, CA

Hathaway Dinwiddie has been selected as the General Contractor for the SOMA Hotel project, a new 17-story building with 250 hotel guest rooms, meeting rooms, lobby and restaurant café at ground floor, rooftop community space with bar and hotel support facilities. The structure comprises a 3-story podium structure containing public and back of house spaces and a 14-story tower structure containing guest rooms and suites.

The Office of Community Investment and Infrastructure (OCII) has established a subcontracting and supplier participation goal for this project at 50% with first consideration for San Francisco-based LBEs, MBEs, WBEs and SBEs. We are currently requesting qualifications/bids for the following trades:

MANLIFT	TOWER CRANE
SURVEY & LAYOUT	ELEVATORS
FIRE SPRINKLERS	HVAC + CONTROLS
ELECTRICAL	PLUMBING

To obtain bid documents, email Project Manager, Alex Ojeda (ojedaa@hdcco.com) and Preconstruction Manager, Sam Mesikepp (mesikepps@hdcco.com). For questions regarding subcontracting goals, email Workforce Diversity Administrator, Leticia Avalos (avalosl@hdcco.com).

HATHAWAY DINWIDDIE CONSTRUCTION COMPANY

275 Battery Street, Suite 300 • San Francisco CA 94111

Phone 415-986-2718 • Fax 415-956-5669

An Equal Opportunity Employer



O.C. Jones & Sons, Inc.
General Engineering Contractor

O.C. Jones & Sons, Inc.

1520 Fourth Street • Berkeley, CA 94710

Phone: 510-526-3424 • FAX: 510-526-0990

Contact: Jean Sicard

An Equal Opportunity Employer

**REQUEST FOR DVBE & SBE
SUBCONTRACTORS AND SUPPLIERS FOR:**

**Fremont Access Road,
ECE Parking Lot & Sidewalk Repairs
Dept. of Education CA School for the Deaf &
CA School for the Blind
State of California – Dept. of General
Services**

Fremont, CA - Project No. 138450

BID DATE: January 9, 2018 @ 2:00 PM

We are soliciting quotes for (including but not limited to): Trucking, Concrete, Electrical, Survey, Striping, Signage, Landscape & Irrigation, Base Rock, Asphalt, Temporary Fencing, Sidewalk Underdrains, Parking Bumpers, and Construction Materials

100% Performance & Payment Bonds may be required. Worker's Compensation Waiver of Subrogation required. Please call OCJ for assistance with bonding, insurance, necessary equipment, material and/or supplies. OCJ is willing to breakout any portion of work to encourage DVBE & SBE Participation. Plans & Specs are available for viewing at our office.



California Sub-Bid Request Ads



We are requesting quotations from subcontractors, as well as qualified and certified DVBE subcontractors and suppliers for the following project:

**Shell & Core Improvements – 1235 Mission Street
Scope 3: Roofs 1 & 3
SFUSD Project No. 11860.3
San Francisco, CA
BID DATE: January 4th, 2018 • BID TIME: 3 PM**

Trades Needed:
Roof Vacuum, sheet metal fabrication,
asbestos abatement

WESTERN ROOFING SERVICE
15002 Wicks Blvd • San Leandro, CA 94577
(510) 686-4951 • (510) 357-1160 Fax
Contact: Wayne Robert
We Are an Equal Opportunity Employer



We are requesting quotations from subcontractors, as well as qualified and certified DVBE subcontractors and suppliers for the following project:

**Shell & Core Improvements – 1235 Mission Street
Scope 2: Roof 2
SFUSD Project No. 11860.2
San Francisco, CA
BID DATE: January 4th, 2018 • BID TIME: 2 PM**

Trades Needed:
HVAC work, carpentry, drywall, roof demo/asbestos
abatement, plumbing

WESTERN ROOFING SERVICE
15002 Wicks Blvd • San Leandro, CA 94577
(510) 686-4951 • (510) 357-1160 Fax
Contact: Wayne Robert
We Are an Equal Opportunity Employer



11555 Dublin Boulevard • P.O. Box 2909
Dublin, CA 94568-2909
(925) 829-9220 / FAX (925) 803-4263
Estimator: JIM YACKLEY
Website: www.desilvagates.com
An Equal Opportunity Employer

DeSilva Gates Construction (DGC)
is preparing a bid as a Prime Contractor for the project listed below:

**CALTRANS ROUTE 680 CONSTRUCTION ON
STATE HIGHWAY IN ALAMEDA, IN FREMONT,
FROM 0.15 MILE SOUTH OF SCOTT CREEK ROAD
UNDERCROSSING TO AUTOMALL PARKWAY
OVERCROSSING,
Contract No. 04-3G6034,
Federal Aid Project No. ACIM-680-1(081)E, Dis-
advantaged Business Enterprise Goal Assigned
is 12%**

**OWNER: STATE OF CALIFORNIA
DEPARTMENT OF TRANSPORTATION**
1727 30th Street, Bidder's Exchange, MS 26, Sacramento, CA 95816

BID DATE: January 10, 2018 @ 2:00 P.M.

DGC is soliciting quotations from certified Disadvantaged Business Enterprises, for the following types of work and supplies/materials including but not limited to:

CLEARING AND GRUBBING/DEMOLITION, COLD PLANE, CONCRETE BARRIER, CONSTRUCTION AREA SIGN, CRACK SEALING, ELECTRICAL, EMULSION SUPPLIER, EROSION CONTROL, FABRIC/GEOSYNTHETIC PAVEMENT INTERLAYER, K-RAIL SUPPLIER, METAL BEAM GUARDRAIL, MINOR CONCRETE, MINOR CONCRETE STRUCTURE, PCC PAVING, ROADSIDE SIGNS, ROADWAY EXCAVATION, RUMBLE STRIP, SIGN STRUCTURE, STRIPING, STRUCTURAL BACKFILL, STRUCTURAL EXCAVATION, SWPPP PREP/WATER POLLUTION CONTROL PLAN PREPARE, TESTING, TRAFFIC CONTROL MATERIAL, UNDERGROUND, VEGETATION CONTROL, TRUCKING, WATER TRUCKS, WATERPROOFING, STREET SWEEPING, EROSION CONTROL MATERIAL, FURNISH PRECAST CONCRETE DECK UNIT, IMPORTED BORROW, CLASS 2 AGGREGATE BASE MATERIAL, CLASS 4 AGGREGATE BASE MATERIAL, HOT MIX ASPHALT (TYPE A) MATERIAL, RUBBERIZED HMA (OPEN GRADE) MATERIAL, RUBBERIZED HMA (GAP GRADE) MATERIAL, STRUCTURE CONCRETE, RETAINING WALL.

Plans and specifications may be reviewed at our offices located at 11555 Dublin Boulevard, Dublin, CA or 7700 College Town Drive, Sacramento, CA, or at your local Builders Exchange, or reviewed and downloaded from the ftp site at <ftp://ftp%25desilvagates.com/f7pa55wd@pub.desilvagates.com> (if prompted the username is ftp@desilvagates.com and password is f7pa55wd) or from the Owner's site at www.dot.ca.gov/hq/esc/oe/weekly_ads/all_adv_projects.php

Fax your bid to (925) 803-4263 to the attention of Estimator Jim Yackley. If you have questions for the Estimator, call at (925) 829-9220. When submitting any public works bid please include your DUNS number and DIR number. For questions regarding registration for DIR use the link at: www.dir.ca.gov/Public-Works/PublicWorks.html

If you need DBE support services and assistance in obtaining bonding, lines of credit, insurance, necessary equipment, materials and/or supplies or related assistance or services, for this project call the Estimator at (925) 829-9220, or contact your local Small Business Development Center Network (<http://californiasbdc.org>) or contact the California Southwest Transportation Resource Center (www.transportation.gov/osdbu/SBTRCs). DGC is willing to breakout portions of work to increase the expectation of meeting the DBE goal.

At our discretion, 100% Payment and 100% Performance bonds may be required as a subcontract condition. This will be a PREVAILING WAGE JOB. DGC is an equal opportunity employer.

**Guy F. Atkinson
Requests**

**Sub-bids from All Qualified & Certified DBE Subcontractors/Suppliers
for:**

Caltrans Contract 07-202124

Construction on State Hwy 710 in Los Angeles County

in and near Bell, Vernon and the City of Commerce

from 0.2 Mile South of Slauson Ave Overcrossing to 0.1 Mile North of Third St Overcrossing

Bids Tuesday, January 30, 2018

Description of Work, Services & Supply (but not limited to): PAVEMENT REHAB & BRIDGE WIDENING: Aggregate Base, Architectural Treatment Gunitite Finish, Biologist Services, Chain Link Railing (Various Sizes), CIDH (16"/87"/90") Concrete Piling, Concrete Barrier (Various Types), Construction Area Signs, Demolition, Drill & Bond Dowel, Drilled Piling, Electrical, Erosion Control, Fence/MBGR, Flatwork, Hazardous Waste Removal, HMA, Joint Seals, Furnish Laminated Panel Signs (Various Sizes), Landscape, LCB Rapid Set, Minor Concrete, Paving Supply, Pavement Marking, OHSS, Driven Piling, Polyester Concrete Overlay (Furnish/Place), Precast Bridge Concrete, Precast Prestressed Concrete Girders (Various Sizes & Types), Rapid Setting Concrete, Rebar, 24" Reinforced Concrete Pipe, Rock Blanket, Furnish Single Sheet Aluminum Signs (Various Sizes) Structural Concrete, Street Sweeping, Structural Steel, Temporary Concrete Washout, Temporary Fiber Roll/Gravel Bag Bern/Hydraulic Mulch/Hydroseed, Temporary Railing, Trucking.

REFER TO PROJECT SPECS FOR COMPLETE BID ITEM LIST.

ENGINEER'S ESTIMATE is \$85,000,000

11% DBE Project Goal

*******Lower Tier DBE participation is greatly encouraged*******

Guy F. Atkinson

18201 Von Karman Ave, 8th Floor, Irvine, CA 92612

socal.estimating@atkn.com

Phone: 949-382-7145 / Fax: 949-553-0252

Guy F. Atkinson is a union contractor and an Equal Opportunity Employer. Atkinson is signatory to the Carpenters, Cement Masons, Laborers and Operating Engineers Unions. 100% Performance & Payment Bonds from an approved surety company will be required for subcontractors with contract value greater than \$100,000. Atkinson will pay the cost of bonds up to 2.0%. Atkinson will assist in obtaining necessary equipment, supplies, materials or related services. We will split items of work (see project specs for full list of bid items) and provide assistance for bonding, LOC and insurance where needed. Subcontractors will be expected to sign Atkinson's standard subcontract and to comply with our company's standard insurance requirements which include a waiver of subrogation. Please provide contractor's license number, DBE cert # number and Department of Industrial Relations (DIR) registration number with your quote.

**Atkinson requests that subs and vendors register and prequalify in our online system at
<https://www.atknextranet.com> prior to bidding.**

**TO DOWNLOAD PLANS, SPECS, THE INFO HANDOUT,
ANY ADDENDA, ETC and VIEW Q&A:**

**Please go to the Caltrans Contracts web site:
<http://www.dot.ca.gov/des/oe/weekly-ads/oe-project.php?q=07-202124>**



California Sub-Bid Request Ads



BROSAMER & WALL, INC.

An Equal Opportunity Employer is requesting quotations from all qualified DBE Professional services, sub-contractors, material suppliers and trucking for the following project:

02-4G5504 - Reconstruct with HMA and PCC, Widen Structure and Upgrade Rails In Siskiyou County And Near Dunsmuir From Sacramento River Bridge To 0.6 Mile South Of North Mount Shasta Underpass

Bid Closing Date: February 7, 2018 @ 2:00 PM

DBE GOAL: 10%

CONTACT:

Robert Rosas
Brosamer & Wall Inc.
1777 Oakland Blvd, Suite 300 • Walnut Creek, California 94596
PH: 925-932-7900 • FAX: 925-279-2269

PROJECT SCOPE:

We are requesting bids for the following trades and/or material suppliers:

Brosamer & Wall Inc., is requesting quotes from all qualified subcontractors and suppliers including certified DBE firms for all items of work type, including but not limited to:

- | | |
|---|--|
| • ASPHALT PAVING | • SCHEDULE DEVELOPER |
| • BRIDGE DEMOLITION | • SIGN STRUCTURES |
| • CONCRETE BARRIER | • STORM DRAIN UNDERGROUND |
| • CONCRETE PAVING | • STREET SWEEPING |
| • CONCRETE MATERIALS – CURE, DOWELS, ETC | • STRIPING |
| • CONCRETE STRUCTURES | • SWPPP/WPC |
| • CONSTRUCTION AREA SIGNS | • SAW AND SEAL |
| • EARTHWORK/GRADING/ROADWAY EXCAVATION | • TRAFFIC CONTROL |
| • ELECTRICAL | • AGGREGATES SUPPLY – AGGREGATE BASE, RAW AGGREGATES, ETC. |
| • EROSION CONTROL – PERMANENT AND TEMPORARY | • TRUCKING |
| • GRINDING (COLD MILL) | • ASPHALT OIL |
| • METAL BEAM GUARD RAIL (MBGR), | • JUST-IN-TIME TRAINING |
| • MINOR CONCRETE | • SERVICE PATROL VEHICLE |
| • PILING | • WATER TRUCK |
| • ROADSIDE SIGNS | |
| • RUMBLE STRIP | |

For the complete list of the Actual Project Bid Items go to:

<http://www.dot.ca.gov/des/oe/weekly-ads/oe-biditems.php?q=02-4G5504>

Requirements: Brosamer & Wall, Inc. will work with interested subcontractors/suppliers to identify opportunities to break down items into economically feasible packages to facilitate DBE Participation. Brosamer & Wall, Inc. is a union signatory contractor. Subcontractors must possess a current contractor's license, insurance coverage and worker's compensation for the entire length of the contract.

All subcontractors will be required to sign our standard Subcontract Agreement. 100% payment and performance bonds may be required. If you have any questions regarding this project or need assistance in obtaining/waiving insurance, bonding, equipment, materials and/or supplies please call or email Robert Rosas contact information below.

Plans and specifications can be viewed at our office located at 1777 Oakland Blvd Suite 300, Walnut Creek, Ca. 94596 or at no cost from Caltrans website. B&W will also make plans electronically please email rosas@brosamerwall.com for free online link. Brosamer & Wall INC., intends to work cooperatively with all qualified firms seeking work on this project. If you are interested in submitting a subcontractor bid for this project, you may contact Robert Rosas Chief Estimator at 925-932-7900 or fax us your quote at 925-279-2269. PLEASE SUBMIT A COPY OF YOUR CURRENT DBE CERTIFICATION WITH YOUR BID. Subcontractors, Dealers/Suppliers and Brokers please provide your designation code to us on or before the bid date. B&W, INC., IS AN EQUAL OPPORTUNITY EMPLOYER.



Graniterock

5225 Hellyer Avenue, Suite #220
San Jose, CA 95138

Phone (408) 574-1400 Fax (408) 365-9548

Contact: David Kennedy

Email: estimating@graniterock.com

REQUESTING SUB-QUOTES FROM QUALIFIED SBE / MBE / WBE / Labor Surplus Area Firms SUBCONTRACTORS/ SUPPLIERS/TRUCKERS FOR:

Rubber Dam No. 3 Fishway Construction and Fabric Replacement

ACWD Project No. G-G43.03B, Job 21083

Owner: Alameda County Water District Engineers' Estimate: \$9,780,000.

BID DATE: January 10, 2018 @ 3:00 PM

Items of work include but are not limited to: SWPPP, Signs, Site Security, Erosion Control, Hazardous Material Control, Dewatering, Anode Well, Cast-In-Place Reinforced Concrete, Misc. Metal Work, Chain-Link Fence & Gate, Shoring, Fiber Optic Work, Electrical and Trucking.

Granite Rock Company 'Graniterock' is signatory to Operating Engineers, Laborers, Teamsters, Carpenters and Cement Masons unions. 100% performance and payment bonds will be required from a qualified surety company for the full amount of the subcontract price. Bonding assistance is available. Graniterock will pay bond premium up to 1.5%. In addition to bonding assistance, subcontractors are encouraged to contact Graniterock Estimating with questions regarding obtaining lines of credit, insurance, equipment, materials and/or supplies, or with any questions you may have. Subcontractors must possess a current contractor's license, DIR number, insurance and worker's compensation coverage. Subcontractors will be required to enter into our standard contract. Graniterock intends to work cooperatively with all qualified firms seeking work on this project.

We are an Equal Opportunity Employer

Women in Construction Operations launches Northern California chapter

Following success in Southern California, Women in Construction Operations (WiOPS) has announced an expansion into the north. The Northern California chapter will launch at an informational outreach event at San Francisco's Dome Construction on January 17, 2018, nearly five years after Southern California's inaugural meeting. WiOPS, a professional organization with nearly 600 members, provides a forum to mentor and further the advancement of women in the building industry.

"We have achieved more than we ever imagined when beginning WiOPS," says Holly Cindell, WiOPS Southern California Chapter founding board member. "Five years ago, our board

planned to have three events a year, and were unsure if anyone would attend. Our sights broadened when more than 150 people joined after our first meeting. Since that time, membership has quadrupled, and our SoCal meetings are booked through 2018 with A/E/C [architecture, engineering, and construction] industry companies vying to host our events."

"WiOPS decided to expand into Northern California based on interest and an expressed need for an organization with our mission from companies who have participated in WiOPS in Southern California," continues Cindell. "Next year, we plan to investigate further opportunities for expansion into other regions throughout California and the U.S."

Open to both women and men who hold professional positions in the construction, architecture, and engineering industries, the new chapter will hold meetings on the last Wednesday of every month various locations throughout the Bay Area. Meetings are free to attendees and will focus on learning, mentoring, and networking through educational speakers, technical activities, and social gatherings.

According to the National Association of Women in Construction (NAWIC), women made up 9.1 percent of the construction industry workforce in the United States last

■ **Continued on page 5**



California Sub-Bid Request Ads



BROSAMER & WALL, INC.

An Equal Opportunity Employer is requesting quotations from all qualified DBE Professional services, sub-contractors, material suppliers and trucking for the following project:

Contract No. 04-4G8504
Replace Pedestrian Overcrossing
FOR CONSTRUCTION ON STATE HIGHWAY IN SAN MATEO COUNTY IN
PACIFICA AT THE SAN JOSE AVENUE PEDESTRIAN OVERCROSSING
 Bid Closing Date: January 24, 2018 @ 2:00 PM
 DBE GOAL: 13%

CONTACT:

Robert Rosas
Brosamer & Wall Inc.
 1777 Oakland Blvd, Suite 300 • Walnut Creek, California 94596
 PH: 925-932-7900 • FAX: 925-279-2269

PROJECT SCOPE:

We are requesting bids for the following trades and/or material suppliers:

Brosamer & Wall Inc., is requesting quotes from all qualified subcontractors and suppliers including certified DBE firms for all items of work type, including but not limited to:

- ASPHALT PAVING
- BRIDGE DEMOLITION
- CLEAR & GRUB
- CONCRETE MATERIALS – CURE, DOWELS, ETC
- CONCRETE STRUCTURES
- CONSTRUCTION AREA SIGNS
- EARTHWORK/GRADING/ROADWAY EXCAVATION
- ELECTRICAL
- EROSION CONTROL – PERMANENT AND TEMPORARY
- FENCE
- GRINDING (COLD MILL)
- LANDSCAPING
- METAL BEAM GUARD RAIL (MBGR)
- MINOR CONCRETE
- NOISE MONITORING
- REBAR
- ROADSIDE SIGNS
- SCHEDULE DEVELOPER
- SHUTTLE SERVICE
- STORM DRAIN UNDERGROUND
- STREET SWEEPING
- STRIPING
- STRUCTURE CONCRETE
- SWPPP/WPC
- TRAFFIC CONTROL
- AGGREGATES SUPPLY
- TRUCKING
- JUST-IN-TIME TRAINING
- WATER TRUCK

For the complete list of the Actual Project Bid Items go to:
<http://www.dot.ca.gov/des/oe/weekly-ads/oe-biditems.php?q=04-4G8504>

Requirements: Brosamer & Wall, Inc. will work with interested subcontractors/suppliers to identify opportunities to break down items into economically feasible packages to facilitate DBE Participation. Brosamer & Wall, Inc. is a union signatory contractor. Subcontractors must possess a current contractor's license, insurance coverage and worker's compensation for the entire length of the contract.

All subcontractors will be required to sign our standard Subcontract Agreement. 100% payment and performance bonds may be required. If you have any questions regarding this project or need assistance in obtaining/waiving insurance, bonding, equipment, materials and/or supplies please call or email Robert Rosas contact information below.

Plans and specifications can be viewed at our office located at 1777 Oakland Blvd Suite 300, Walnut Creek, Ca. 94596 or at no cost from Caltrans website. B&W will also make plans electronically please email rosas@brosamerwall.com for free online link. Brosamer & Wall INC., intends to work cooperatively with all qualified firms seeking work on this project. If you are interested in submitting a subcontractor bid for this project, you may contact Robert Rosas Chief Estimator at 925-932-7900 or fax us your quote at 925-279-2269. PLEASE SUBMIT A COPY OF YOUR CURRENT DBE CERTIFICATION WITH YOUR BID. Subcontractors, Dealers/Suppliers and Brokers please provide your designation code to us on or before the bid date. B&W, INC., IS AN EQUAL OPPORTUNITY EMPLOYER.



Proven Management, Inc.
 225 3rd Street, Oakland, CA 94607
 Phone: 510-671-0000 • Fax: 510-671-1000

PMI requests proposals/quotes from all qualified and certified DBE/SBE/WBE/MBE subcontractors, suppliers, and truckers for the following project:

THE CONSTRUCTION OF HAYWARD MAINTENANCE COMPLEX
CENTRAL WAREHOUSE • BART #01RQ-150
Bids: 01/23/2018 @ 2 pm

The work in this contract includes but is not limited to: Demolition; Asbestos Abatement; Concrete; Rebar; Gypsum Cement Underlayment; Non-Shrink Grout; Concrete Unit Masonry; Metal Fabrications; Metal Stairs; Metal Railings; Decorative Metal; Struct Stl Framing; Cold-Formed Metal Framing; Rough Carpentry; Wood Casework; Plastic Paneling; Fiberglass Reinforced Gratings; Thermal & Moisture Protection; Radiant Heating Rigid Insulation; Vapor Retarders; Standing-Seam Metal Roof Panels; Metal Wall Panels; Flashing & Sheet Metal; Firestopping; Metal Drs/Frms; Access Doors & Panels; Overhead Coiling Doors; Alum-Framed Entrances & Storefronts; Door Hardware; Glazing; Drywall; Tile; Acoustical Panel Ceilings; Resilient Base & Accessories; Resilient Tile Flooring; Static Dissipative Resilient Flooring; Resilient Athletic Flooring; Resinous Flooring; Tile Carpeting; Painting; Chemical Resistant Coatings; Bldg Specialties; Loading Dock Equipment; Residential Appliances; Industrial Equipment; Site Furnishings; Metal Bldg; Hydraulic Elevators; Plumbing; Fire Sprinkler Systems; HVAC, Electrical; Communication Systems; CCTV & Fire & Alarm Systems; Underground Utilities; Asphalt & Concrete Paving; Concrete Curbs, Gutters & Walks; Pavement Markings; Traffic Barriers; Chain Link Fences/Gates; Planting & Irrigation.

PMI will provide assistance in obtaining necessary bonding, insurance, equipment, supplies, materials or other related services. 100% Payment & Performance bonds will be required from a single, Treasury-listed surety company subject to PMI's approval. PMI will pay bond premium up to 1.5%. Subcontractors awarded on any project will be on PMI's standard form for subcontract without any modifications. For questions or assistance required on the above, please contact Ben Pearce at ben@provenmanagement.com PMI is signatory to the Operating Engineers, Carpenters, and Laborers Collective Bargaining Agreements.

We are an Equal Opportunity Employer

Women in Construction Operations launches Northern California chapter

Continued from page 4

year, with just 31 percent in professional and managerial positions.

“Although we have seen some growth in the number of women in the industry, the percentage is still too low when you consider the population in California is 49.8 percent male and 50.2 percent female,” said Jennifer Lauritzen, WiOPS Northern California board member. “In an ideal state, the percentage of women in the industry would more closely align with the population. WiOPS is bringing professional women in the industry together with the purpose of providing a place for them to learn more about technology and development in the industry, as well as a place to discuss the specific issues women face in their careers and obtain feedback and guidance from others who have been through it.

SOURCE: www.constructionspecifier.com

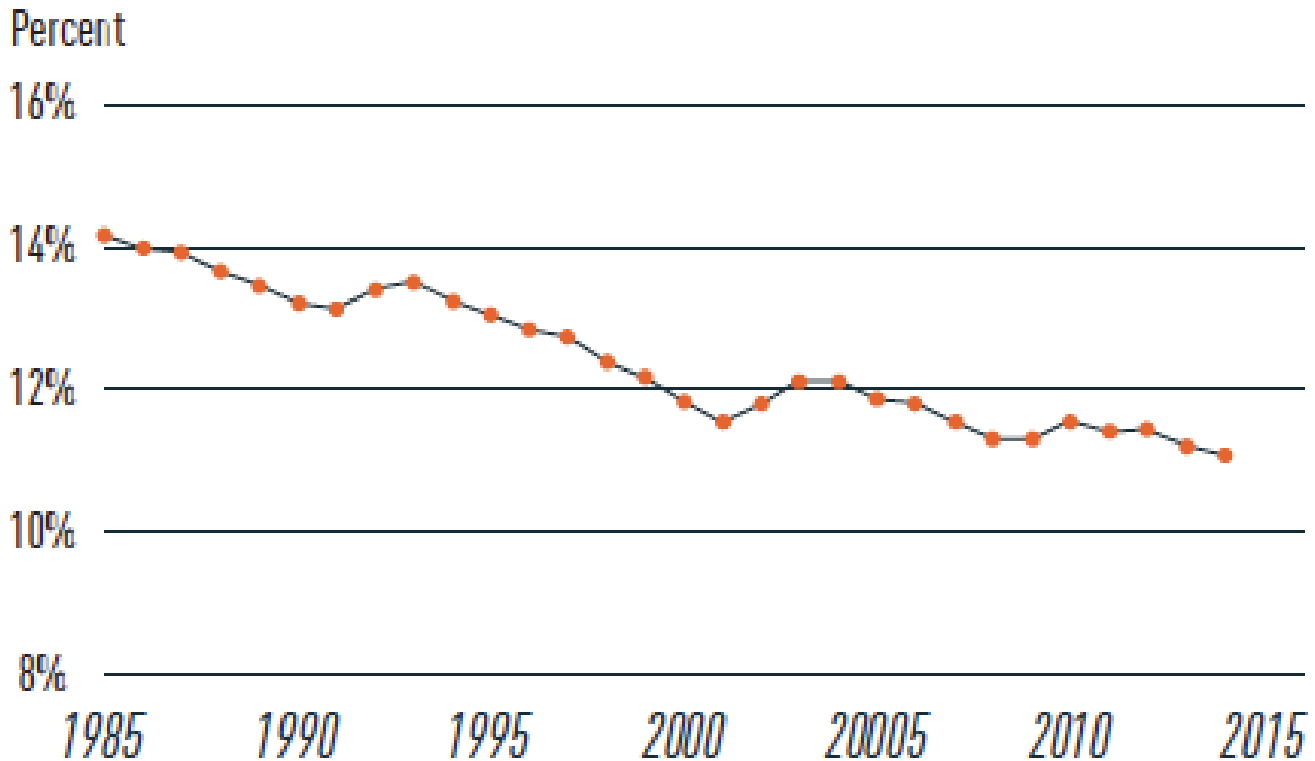


The first meeting for WiOPS Northern California Chapter will be held January 17 in San Francisco. Photo © BigStock.com

Small Business Facts: Role of Microbusiness Employers in the Economy

Continued from page 1

Chart 2: Microbusiness Employment Share Trend



California Sub-Bid Request Ads

Candlestick Point/Hunters Point Shipyard Phase 2 - in San Francisco CP/HPS2 Infrastructure and Land Development Professional Consultants RFQ

Consultants directly contracted with the Owner (Civil Engineer) and Consultants to Civil Engineer (including Landscape Architect, Surveyor, JT Consultant, etc) are requested to submit Statements of Interest and Qualifications for Professional Services to prepare and refine design documents for infrastructure improvements for the Candlestick Point and Hunters Point Shipyard Phase 2 Redevelopment Projects (CP/HPS2). As a result of this RFQ, a pool of qualified Civil Firms and Consultants will be placed on a "Shortlist" for future work, and a full Request for Proposals will be solicited to the Shortlist for contract awards. No Contract Award will be made as a result of this RFP.

For more information, please visit:

Architects and Engineers:

City's OCA website:

<http://mission.sfgov.org/OCABidPublication/BidDetail.aspx?K=12607>

Consultants and Professional Services:

City's OCA website:

<http://mission.sfgov.org/OCABidPublication/BidDetail.aspx?K=12608>

Successor to the San Francisco Redevelopment Agency (SFRA) has established the 50% Small Business Enterprise (SBE) Participation goal for construction firms.

Respondents are encouraged to check this website regularly for updates.

Pre-Bid Meeting:

January 4, 2018 @ 3:00 PM
1 Sansome Street, Suite #3200
San Francisco, CA 94104

Proposals must be submitted
January 18, @ 2:00 PM (PST).